



Healthcare Products



Linen

Garments

Microfiber

For high quality healthcare products and service, choose Morgan.
www.MorganServices.com



WHY MORGAN?...

Morgan Services is a family owned textile company in business for over 125 years, with locations across the country. We specialize in linen and uniform rental services for all types of facilities. Our value as a business partner is our ability to help you reduce costs, improve productivity and enhance your image. When it comes to linens and uniforms – we do the work so you don't have to!

Convenience, Quality & Appearance

We deliver fresh, hygienically clean healthcare linen on a regular schedule that customers can rely on. Our products are manufactured with high quality fabrics laundered to the highest standards.

Savings

Morgan Healthcare Linen Services counts – by customer – all soiled linen using the most updated count system technology in the market to help you control product loss. We use cloth gowns which can cost you up to 15% less than the paper equivalent.

Inventory Control

Morgan Healthcare Linen Services ensures you have the correct amount of linen and garment inventory from one delivery to the next based on your specific requirements.

Responsible Environmental Practices

Morgan is committed to being an environmentally responsible organization. We utilize highly efficient equipment and water reuse systems; we use environmentally-friendly wash chemicals; we reduce landfill waste by promoting cloth over paper; and we recycle.



Morgan has been awarded the highly-coveted HLAC accreditation, given to textile providers that have met the highest standards in the industry for processing healthcare textiles. Morgan expects to have plant-wide HLAC accreditation by 2014.



The Textile Rental Services Association (TRSA)'s Clean Green Certification recognizes companies that demonstrate responsible leadership in sustainability and conservation to protect the environment.

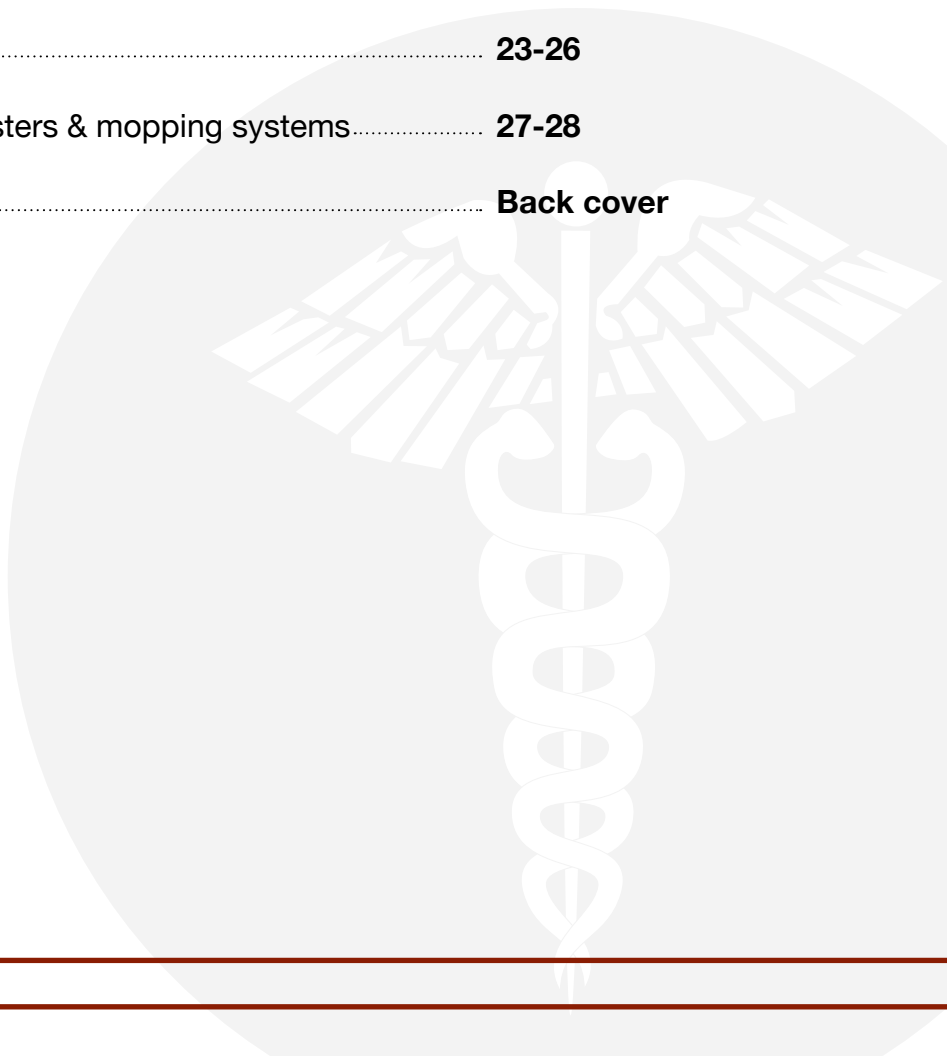
Bottom line: We do the work so you don't have to

Whether it is reducing overall costs, improving your productivity or enhancing your image – Morgan has the technology, systems and experience to do the work so you don't have to.



TABLE OF CONTENTS

Linens: Bed linens, blankets & towels	1-2
Garments & associated products	3-4
Scrubs, shirts, tunics, pants & reversible scrub apparel	5-11
Warm-up jackets.....	12-13
Lab coats, jackets & barrier gowns.....	14-16
Patient & exam gowns, robes & pajama pants.....	17-21
Associated products.....	22
Mats and floor coverings	23-26
Microfiber products: Cloths, dusters & mopping systems.....	27-28
Morgan locations and contact	Back cover



WHY COUNTING SOIL SHOULD BE IMPORTANT TO YOU . . .

Have you ever been billed for questionable loss or damage charges?

Have your loss charges been consistently inconsistent?

Are linen and garment inventories regularly done at your facility?

Have you ever wondered how many pieces you actually use on a weekly basis?

At Morgan Healthcare Linen Services, we count – by customer – all soiled linen using the most updated count system technology in the market. Accurately counting linen enables you to significantly reduce or eliminate loss charges from your invoice.

- **ALL LINEN COMPANIES CHARGE FOR LOSS AND ABUSE!**
- The only proven method to balance inventory is when your vendor counts all product including soiled linen and garments.
- Many linen service companies do not count the soil that is returned to their facility by the customer. Why? Doing this reduces their costs, not yours! And it leads to questionable loss charges.

Whether or not you use **Morgan Healthcare Linen Services**, ask your linen provider to validate loss and abuse charges on a regular basis.

It could save you thousands of dollars.

LINENS: BED LINEN, BLANKETS AND TOWELS



- Towels**
- Wash cloths
 - Hand towels
 - Bath towels
 - XL bath towels



- Sheets**
- Draw
 - Twin
 - Full
 - Queen
 - King
 - Knit fitted
 - Stretcher



Premium Towels



Deluxe Flat Sheets



Executive Towels



Deluxe Blankets



Spa Towels



Bath Blankets

Additional products may be available in a range of colors, sizes and styles. For more information go to www.MorganServices.com



Thermal Blankets

WHY SHOULD I GET MY PROFESSIONAL GARMENTS FROM MORGAN?...

Personalized garment systems are more effective because:

- Losses are greatly reduced or eliminated when staff has personalized scrubs.
- Staff can have peace of mind that the garment assigned to them has only been worn by them.
- Garment usage is tracked using radio frequency or barcode technology.
- Garments can be color-coded by department to facilitate identification.
- Consistent garment colors and styles improve overall professional appearance.

60%
OF UNIFORMS
HAVE BACTERIA

More than 60% of hospital nurses' and doctors' uniforms tested positive for potentially dangerous bacteria. (American Journal of Infection Control, Sept. 2011)

**SUPERBUGS CAN LIVE
ON COATS FOR UP TO**

56
DAYS

A national hospital survey warns that *Clostridium difficile* (C.diff) infections are sickening nearly a half million people a year in the U.S., more than six times previous estimates. In one study, more than 20% of nurses' uniforms had C.diff on them at the end of a shift. Superbugs, such as Staph, can live on polyester coats for up to 56 days. (National Hospital Survey, Association for Professionals in Infection Control and Epidemiology (APIC), Nov. 2008)

20
MINUTES TO
DESTROY
BACTERIA

To kill staphylococci, it takes 20 minutes washing in 140°F water - the beginning temperature where most bacteria begin to be destroyed. Most home wash cycles average 10 to 12 minutes at 125°F to 130°F. The Centers for Disease Control and Prevention recommend a 1:10 mixture of water and bleach to properly disinfect body fluid contamination. **Assuming a home washer is the standard 33 gallon system, it would require 3 gallons of bleach.** (Infection Prevention, Apr. 2009)

WHY SHOULD I GET MY PATIENT GARMENTS FROM MORGAN?...

Cloth	vs.	Paper
You need only one gown per patient.	USE LESS	Paper gowns often tear during use causing a multitude of waste.
Cloth gowns cost up to 15% less than the paper equivalent.	COST LESS	Depending on quality, paper gowns can cost as much as \$1.50 each, not including shipping, disposal and waste.
Patients like the comfort, coverage, warmth, and feel of cloth gowns.	INCREASE PATIENT SATISFACTION	Patients often feel paper gowns are uncomfortable, cold and lack proper coverage.
Cloth gowns are noticed and appreciated by patients, which enhances your practice's image.	IMPROVE PRACTICE'S IMAGE	Paper gowns result in lower patient satisfaction, which affects a practice's image.
Cloth gowns are recyclable and laundered in environmentally friendly facilities.	HELP THE ENVIRONMENT	Paper gowns are destined for landfills, and in many cases are considered hazardous and environmentally unfriendly.

64%

THE NUMBER OF PATIENTS ACROSS AMERICA THAT PREFER WEARING A CLOTH PATIENT GOWN TO ONE MADE OF DISPOSABLE PAPER

72%

OF PATIENTS SAY CLOTH PATIENT GOWNS ARE MORE COMFORTABLE THAN PAPER GOWNS

(International Communications Research study, October 2002)

UNISEX FASHION SCRUB SHIRTS & PANTS

Shirts

65% Poly/35% Cotton Fashion

Poplin® Sizes: XS - 5XL

- Extra long cap sleeves
- Left chest pocket
- Reinforced, bartacked V-neck
- Non-reversible
- Other colors may be available at an additional cost

Pants

65% Poly/35% Cotton Fashion

Poplin® Sizes: XS - 5XL

- Drawcord closure with easy glide coordinating webbing
- Right hip pocket
- Non-reversible
- Other colors may be available at an additional cost



Blueberry



Burgundy



Ciel Blue



Cobalt



Dark Teal



Dill



Eggplant



Fir Green



Navy



Black



LADIES V-NECK TUNICS

Ladies' V-Neck Tunics
65% Poly/35% Cotton Fashion
Poplin® Sizes: XS - 4XL

- Set-in sleeves
- Side vents
- Two lower pockets
- Scissor holder in right pocket
- Reinforced, bartacked V-neck
- Other colors may be available at an additional cost



Blueberry

Burgundy



Ciel Blue

Cobalt



Navy

Dark Teal

Dill



Black

Eggplant

Fir Green

GARMENTS

SLACKS & PANTS

Unisex Ultimate Pants
65% Poly/35% Cotton Fashion
Poplin® Sizes: XS - 5XL

- Multi-stitched elastic waistband with inside drawcord
- Left side-leg double cargo pocket with hook and loop closure for outside pocket
- Two side-slant inside pockets
- Right side-leg divided cargo pocket with snap closure scissor tab
- Other colors may be available at an additional cost

Available in:

Black	Eggplant
Blueberry	Fir Green
Burgundy	Navy
Ciel Blue	White

Ladies' Fashion Slacks
65% Poly/35% Cotton Fashion
Poplin® Sizes: XS - 4XL

- Multi-stitched elastic waistband
- Two side-slant inset pockets
- Other colors may be available at an additional cost

Available in:

Black	Dill
Blueberry	Eggplant
Burgundy	Fir Green
Ciel Blue	Navy
Cobalt	White
Dark Teal	



UNISEX SCRUBS

Unisex Set-In Sleeve Scrub Shirts
65% Poly/35% Cotton Fashion
Poplin® Sizes: XS - 5XL

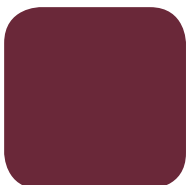
- Reversible
- Color-coded neck binding
- Left chest pocket on both sides
- Reinforced, bartacked V-neck
- Other colors may be available at an additional cost

Unisex Drawcord Scrub Pants
65% Poly/35% Cotton Fashion
Poplin® Sizes: XS - 5XL

- Reversible
- Right hip pocket on both sides
- Drawcord closure with easy glide color-coded webbing
- Other colors may be available at an additional cost



Blueberry



Burgundy



Ciel Blue



Eggplant



Fir Green



Navy



Black

UNISEX REVERSIBLE SCRUB APPAREL

Unisex Scrub Shirts Poly/Cotton Fashion Blend®

Sizes: XS - 5XL

- Reversible
- Set-in sleeves
- Left chest pocket on both sides
- Reinforced bartacked V-neck
- Color-coded neck binding
- Other colors may be available at an additional cost

Unisex Scrub Pants Poly/ Cotton Fashion Blend®

Sizes: XS - 5XL

- Reversible
- Drawstring closure with easy glide color-coded webbing
- Right hip pocket on both sides
- Other colors may be available at an additional cost



Blueberry



Ciel Blue



Cranberry



Jade



Misty



Navy



Teal



Unisex Knit Cuff Warm-Up Jackets Poly/Cotton Fashion Blend®

Sizes: XS - 5XL

- Raglan sleeves
- Snap front closure
- Two lower pockets
- Coordinating knit cuffs
- Scissor holder in right pocket
- Other colors may be available at an additional cost



Ciel Blue



Navy

Unisex V-Neck Scrub Shirts Poly/Cotton Fashion Blend®

Sizes: XS - 5XL

- Set-in sleeves
- Reversible with one chest and one lower pocket on both sides
- Scissor holder in lower pocket on both sides
- Reinforced bartacked V-neck
- Color-coded neck binding
- Other colors may be available at an additional cost

CROSS OVER TUNICS & RAGLAN SLEEVE SHIRTS

Ladies' Cross-Over Tunics with Contrasting Trim

65/35 Fashion Poplin® Sizes: XS-4X

- Set-in sleeves
- Side vents
- Two lower pockets with pencil divider and inset contrasting pockets
- Scissor holder in right pocket
- Tunnel belt with coordinating webbed belting
- Other colors may be available at an additional cost

Unisex Raglan Sleeve Scrub Shirts with Contrasting Sleeves

65/35 Fashion Poplin® Sizes: XS-5X

- Left chest pocket with pencil stitch
- Reinforced, Bartacked V-neck
- Side vents
- Tunnel belt with coordinating webbed belting
- Other colors may be available at an additional cost



Burgundy w/ Black



Sangria w/ Navy



Dill w/ Navy



Cobalt w/ Green Apple



Navy w/ Ciel Blue



Ciel Blue w/ Navy



Tunnel Belt Rear View



Navy w/ Ciel Blue



Fir Green w/ Navy



Navy w/ Sangria



Black w/ Burgundy



Black w/ Pewter



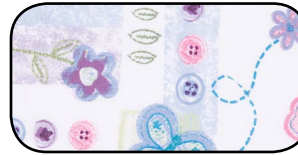
Chocolate w/ Tan

LADIES V-NECK TUNICS

Ladies' V-Neck Tunics

65% Poly/35% Cotton Fashion Poplin® Sizes: XS - 4XL

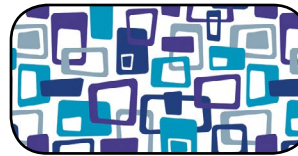
- Set-in sleeves
- Side vents
- Two lower pockets
- Scissor holder in right pocket
- Reinforced, bartacked V-neck
- Other colors may be available at an additional cost



Bloomin Buttons



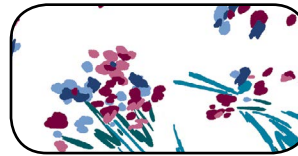
Crazy Daisy



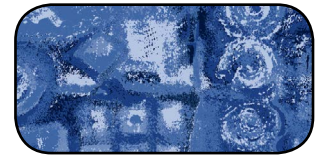
Deco Squares



Floating Hearts



Floral Spray



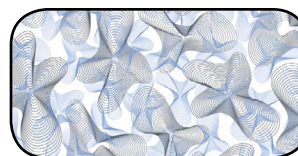
Jazzy Blues



Love, Hope, Care



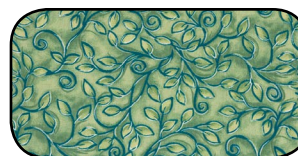
Night Bloom



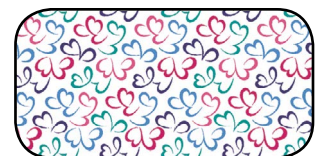
Pinwheel Ciel



Sweethearts



Vintage Green



Whimsical

LADIES' TUNICS & PANTS

Ladies' Double V-Neck Tunics 65/35 Fashion Poplin®

Sizes: XS-XL, (2XL-4XL extra charge)

- Set-in sleeves
- Princess Seams
- Two lower pockets w/ contrasting pocket trim
- Contrasting V-Neck Placket
- Flattering slim fit
- Other colors may be available at an additional cost

Ladies' Side Flex Tunics 65/35 Fashion Poplin®

Sizes: XS-XL, (2XL-4XL extra charge)

- Set-in sleeves
- Concealed front pocket
- Moisture wicking flexible side panels
- Form-flattering, stylish and flexible
- Other colors may be available at an additional cost



Chocolate w/ Pretty Pink

Ciel Blue w/ Navy

Burgundy w/ Black

Ciel Blue w/ Navy

Eggplant w/ Plum

Pewter w/ Black

Pretty Pink w/ Black

Spice w/ Black

Ladies' Drawstring Flair Pants 65/35 Fashion Poplin®

31" Inseam

Sizes: XS-XL, (2XL-4XL extra charge)

- Coordinating Webbed Drawcord
- Elastic waist back
- Two side inset pockets
- Right hip pocket
- Natural Waist
- Flared legs with side slit
- Other colors may be available at an additional cost

UNISEX WARM-UP JACKETS

Unisex Knit Cuff Warm-Up Jackets
65% Poly/35% Cotton Fashion Poplin®

Sizes: XS - 5XL

- Raglan sleeves
- Snap front closure
- Two lower pockets
- Scissor holder in right pocket
- Coordinating knit cuffs
- Other colors may be available at an additional cost



Blueberry



Burgundy



Ciel Blue



Cobalt



Dark Teal



Dill



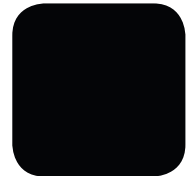
Eggplant



Fir Green



Navy



Black





LADIES WARM-UP JACKETS

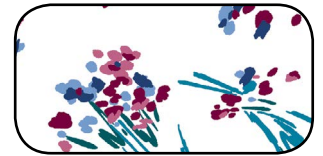
Ladies' Warm-Up Jackets

65% Poly/35% Cotton Fashion Poplin® Sizes: XS - 4XL

- Set in sleeves
- Snap front closure
- Two lower pockets
- Scissor holder in right pocket
- Coordinating knit cuffs
- Other colors may be available at an additional cost



Floating Hearts



Floral Spray



Jazzy Blues



Love, Hope, Care



Night Bloom



Petal Pushers



Spring Leaves



Vintage Green



Whimsical

LAB COATS & JACKETS

Men's Extra Long Lab Coat
65% Poly/35% Combed Cotton Fine
Line Twill

- Sizes: 38 - 56
- 45" length based on size 40
 - Sleeves are 1-1/2" longer
 - Left chest pocket
 - Two lower outside pockets
 - Side slits for pocket access
 - Stitched down back belt

Men's Lab Coat
80% Poly/20% Combed Cotton Poplin

- Sizes: S - 3XL
- Left chest pocket
 - Two lower outside pockets
 - Side slits for pocket access
 - Stitched down back belt

Ladies' Lab Coat
80% Poly/20% Combed Cotton Poplin

- Sizes: XS - 3XL
- Left chest pocket
 - Two lower outside pockets
 - Stitched down back belt

Men's Consultation Jacket
65% Poly/35% Combed Cotton
Heavyweight Twill

- Sizes: S - 3XL
- Six oversized pockets: three outside, three inside
 - Center back vent
 - Left chest pocket



LAB COATS & JACKETS

- Unisex Consultation Lab Jacket**
 65% Poly/35% Cotton Fine Line Twill
 Sizes: XS - 3XL (2XL & 3XL extra charge)
- Oversized left chest pocket with pencil division
 - Two oversized lower double pockets (ideal for Tablet or PDA)
 - Two oversized inside lower pockets

- Unisex Consultation Jacket**
 80% Poly/20% Cotton Poplin
 Sizes: S - 3XL
- Left chest pocket
 - Two lower outside pockets
 - Two lower inside pockets
 - Center back vent



- Unisex Consultation Lab Coat**
 65% Poly/35% Combed Cotton Fine Line Twill
 Sizes: XS - 3XL
- Two chest pockets, within left pocket is a separate double pencil pocket stitched to coat
 - Two oversized lower double pockets (ideal for PDA)
 - Two oversized inside lower pockets

PROTECTIVE COATS & ISOLATION/BARRIER GOWNS



- Unisex Protective Coat Texture Shield® (Front)
 Sizes: XS - 6XL
- Front and sleeves made of single-ply fluid-resistant fabric
 - Back made of Polyester/Cotton Blend
 - Concealed placket front with snap closure
 - Throat Guard™ collar with “hook and loop” closure
 - Two lower pockets
 - Left chest pocket
 - Knit cuffs
 - Back vent



- Unisex Protective Coat Texture Shield® (Front)
 Sizes: XS - 6XL
- Front and sleeves made of single-ply fluid-resistant fabric
 - Back made of Polyester/Cotton Blend
 - Concealed placket front with snap closure
 - Throat Guard™ collar with adjustable snap closure for improved neck protection
 - Two lower pockets
 - Left chest pocket
 - Side slits for pocket access
 - Knit cuffs
 - Back vent

- All-Barrier Precaution Gown
- Entire gown made of single-ply fluid-resistant barrier fabric
 - White knit cuffs Texture Shield D-Stat®
 - Two sets of tie closures (one at back of neck, one at waist)
 - 48-1/2” length
 - 60-1/2” sweep

PATIENT GOWNS

All Stars Gowns

100% Poly Woven Flame-Out®

- Extra full cut
- Wide raglan sleeves
- Tie closure
- All garments are made of chemical-free fabrics with inherent flame-resistant properties, specially made to exceed the stringent requirements of the Federal Children's Sleepwear Acts DOC-FF-3-71 and 5-74.

ICU/Telemeter Gown

Poly/Cotton Fashion Sheeting

Size: L

- 47" length
- 5" insleeve with snap sleeve closure
- 67" sweep
- V-neck
- Angle back
- Extra large telemeter pocket with fenestration
- Meets California's Fire Marshal Title 19



Sparkler
Size: Large

Ted-E
Size: X-Small

G-raffe Yellow
Size: Small

Turt-L Blue
Size: Medium

Frog-E Green
Size: Large

ANGLE BACK PATIENT GOWNS

Angle Back Patient Gowns
Poly/Cotton Fashion Sheeting

Size: L

- 51" length
- 63" sweep
- 8" insleeve
- Meets California's Fire Marshal Title19

Angle Back Patient Gowns
Poly/Cotton Fashion Sheeting

Size: L

- 45" length
- 63" sweep
- 2-1/2" insleeve
- Meets California's Fire Marshal Title19



GARMENTS



Sapphire Fossil
Large



Blue Crystal
Large

PLUS GOWNS

Plus Gown Poly/Cotton Fashion Sheeting

Size: One Size

- Full back overlap
- Tie back closure
- Fits patients up to 5XL
- 47" length
- 7" spacious insleeve
- 87" sweep for complete coverage
- Meets California's Fire Marshal Title19

Raindrops



Matchsticks



Magna IV Gown

Poly/Cotton Fashion Sheeting

Size: One Size

- Full overlap at neck, angle back at waist
- No waist tie allows gown to hang properly on different size patients while ensuring patient modesty
- Fits patients up to 10XL
- 50" length
- 104" sweep for complete coverage
- 6" spacious insleeve with snap sleeve closure
- Extra large telemeter pocket with fenestration
- Meets California's Fire Marshal Title19

EXAM GOWNS

Unisex Exam Jacket
65/35 Poly/Cotton Poplin
Size: NS

- Front wrap tie makes it easy to open and close, and to adjust to fit
- 28-1/2" length
- Full coverage for added patient modesty and comfort
- Meets California's Fire Marshal Title19

Examination Gown
Poly/Cotton Fashion Sheeting
Size: NS

- Tie closure gown may be worn with opening in the front or back
- 42" length
- Generous overlap
- Meets California's Fire Marshal Title19



Dark Teal



Aqua



Plum



Eggplant



Blueberry

OTHER PATIENT GARMENTS



Blue Stripe

- Collarless Robe
Polyester Cotton Woven
Seersucker
Size: M-4XL
- Full length with attached belt
 - Large lower right pocket
 - Meets California's Fire Marshal Title19



Mauve

- Mammography Exam Jacket
65% Poly/35% Cotton Poplin
Size: One Size
- Inside and outside waist ties for easy examination and added modesty
 - Allows examination while maintaining shoulder and back coverage
 - Meets California's Fire Marshal Title19



Light Blue

- Pajama Pants
Polyester/Cotton Fashion Sheeting
Size: M-2XL
- EZ Glide color-coded webbed drawstring at waist
 - Meets California's Fire Marshal Title19

ASSOCIATED PRODUCTS

GOJO® Skin Care Solutions for Healthcare

Specializing in the leading brands - PURELL®, America's #1 Instant Hand Sanitizer, and PROVON®, a leading skin care brand. Advanced anti-microbial formulas and extra-nourishing formulas are specifically designed for healthcare workers who sanitize frequently throughout the day. Available in reliable push-style and touch-free dispensing.



Push-Style Dispenser

Holds 1200mL sealed refill in a remarkably small footprint. Great for locations where a more compact dispenser is preferred.



PURELL® Advanced Instant Hand Sanitizer Foam

Next-generation skin care in a non-aerosol foaming formulation. The 70% ethyl alcohol formulation is free of fluorinated chemicals. The thick, rich foam stays on your hands and contains moisturizers to help keep skin hydrated.



Touch-Free Dispenser

High-capacity dispenser is ideal for high-traffic areas. Personalized placeholders, desk caddy's and wall units offer multiple design options for placement throughout your facility.



GOJO® Antibacterial Foam Handwash

High-performance, antibacterial hand soap offers luxurious lather and an appealing fragrance. Enriched with a moisturizer, natural extract and skin conditioner. USDA certified bio-based formulation.



Tapered Bottom



Straight Bottom

30"x40" Fashion Shield Drawcord Bags with Cover Flap
100% Polyester

- Special side seam for maximum strength
- Nylon drawcord with plastic B-lock closure
- Imprinted with Biohazard OSHA logo (see photo)
- Cover flap sewn to inside of bag, covers soiled linen while on the stand and reduces upward drafts when closing bag

10 Compartment Fold-Up Garment Locker

Great when installation space is limited. Ideal uses are gym locker or purse storage or other personal items.

Dimensions (w x d x h)
16-1/2" x 16" x 77-1/2"

Compartment Door Size
(w x h) 12" x 7"



Standard Soil Drop

Soiled garment collection. Perfect for small installations or where floor space is at a premium.

Maxi Soil Drop

8 compartment footprint with more than twice the capacity of a Standard Soil Drop.

8 Compartment Hanging Garment Locker

Individual doors keyed separately for security. Stores hanging uniforms, coats, jackets and more.

Dimensions (w x d x h)
26" x 21-1/4" x 84-1/2"

Compartment Door Size (w x h)
4-3/4" x 38-1/4"

Big 8 Compartment Hanging Garment Locker

Fully one-third larger than the Standard 8 Compartment, with larger openings for customer convenience.

Dimensions (w x d x h)
32-5/8" x 21-1/4" x 84-1/2"

Compartment Door Size (w x h)
6-3/8" x 38-1/4"



More extensive product ranges and customized business solutions are available from your local sales representative.
Get in touch at www.MorganServices.com

WHY SHOULD WE USE MATS? ...

For a clean, fresh appearance and the most effective floor protection, rental service mats are best. Best because they are constructed of high-twist nylon yarns that act as tiny brushes to scrub the soles of shoes, removing up to 85% of the soil that could otherwise be tracked in on shoes. Best because rental service mats are regularly laundered using specialized washing equipment to remove built up soil and restore the mat's attractive appearance. Best because...

SAVE MONEY

- On less frequent floor cleaning.
- On stripping and waxing floors.
- On vacuuming, shampooing and replacing carpet.

SAFETY

- Helps keep floors dry.
- Mat surface is more slip resistant than hard surface floors.

PROTECT FLOORS

- 85% of the soil brought into a building can be contained within the first 10-12 feet.
- From everyday wear and tear in high traffic and work areas.

ANTI-MICROBIAL

- Anti-microbial mats are treated to protect against mold, bacteria and air-borne contaminants AND protect the health of your employees and facility.

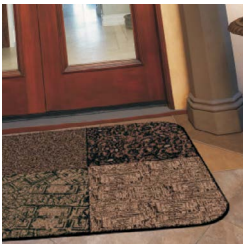
ANTI-FATIGUE

- Helps prevent tired feet at work stations.
- Insulates against cold floors.
- Improves productivity.

ENHANCE APPEARANCE

- Modern, attractive colors to compliment most color schemes.
- Clean, fresh mats look better and work more efficiently, and a regularly scheduled rental service ensures that mats will always be attractive.

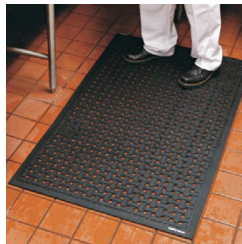
WHERE FLOOR MATS SHOULD BE USED



Doorways



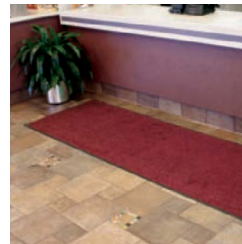
Lobbies



Workstations



Hallways



Food Areas



Entrances

LOGO MATS



- Manufactured using our computerized MasterWeave™ tufted process.
- 24 colors available with up to 6 colors per mat.
- Static dissipative nylon yarn with StainStopper™ Technology.
- Yarn dyed with Perma-Dye™ dying technology for vibrant color.
- 100% Nitrile rubber backing for increased slip and skid resistance.
- Certified “high traction” by the National Floor Safety Institute.
- Available in High Resolution 31.2 oz and Standard 23.5 oz per sq. yard weights.

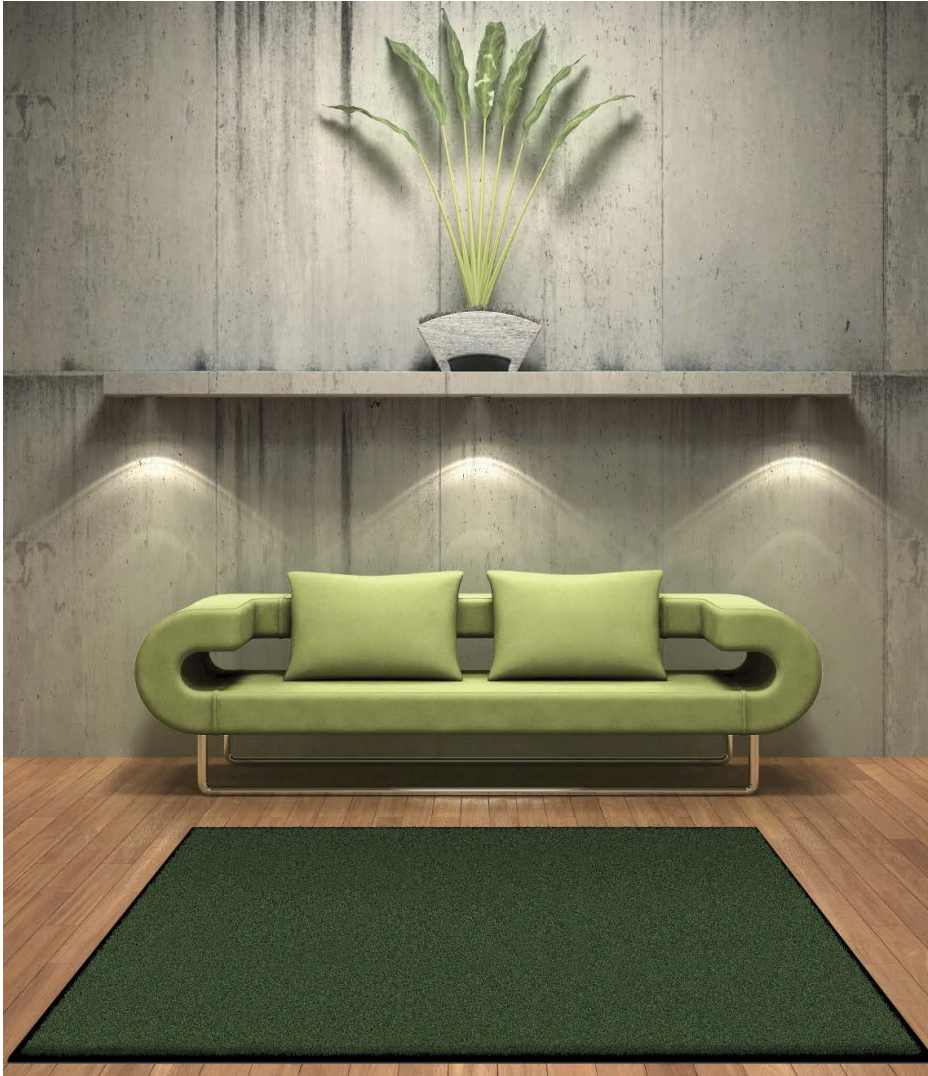


STANDARD SIZES: 2'x3', 3'x4', 3'x5', 3'x10', 4'x6', 4'x8', other sizes may be available.
 AVAILABLE BACKING: Smooth, Universal Cleats and Suction.



MATS

CLASSIC MATS™ & CLASSIC CARPETS™



- Ultra-Twist™, heat-set nylon yarn construction resists packing and crushing.
- Dirt filters into the mat rather than remaining on top.
- Mat is static-dissipative with StainStopper™ Technology.
- Yarn dyed with Perma-Dye™ dying technology for vibrant color.
- 100% Nitrile rubber backing for increased slip and skid resistance.
- Certified "high traction" by the National Floor Safety Institute.



STANDARD SIZES: 2'x3', 3'x4', 3'x5', 3'x10', 4'x6', 4'x8' other sizes may be available*
 AVAILABLE BACKING: Smooth, Universal Cleats and Suction.



*some sizes may not be available

SUPERSCAPE™



- Durable 100% Nitrile rubber mat provides a slip-resistant surface.
- Molded tread surface cleats effectively scrape tough dirt and grime off of feet, keeping soil below foot level.
- Available in General Purpose with holes and Grease Resistant.
- Certified "high traction" by the National Floor Safety Institute.



MAT THICKNESS: 1/4".

GREASE RESISTANT STANDARD SIZES: 2.5'x3', 3'x5', 3'x10', 4'x6', 4'x8', 6'x6 and 6'x8'.

GENERAL PURPOSE STANDARD SIZES: 3'x5'.

SPECIAL SIZES: Custom Sizes are not available.

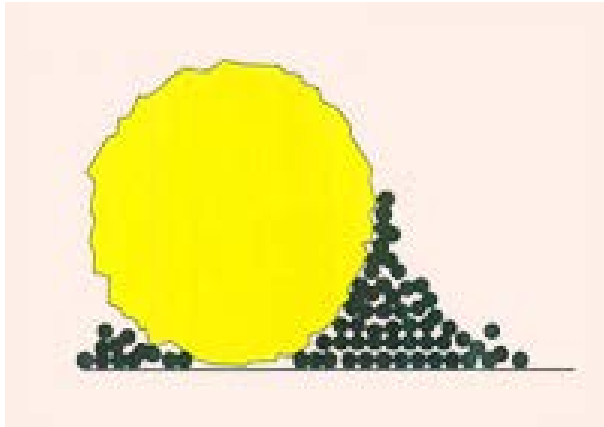
AVAILABLE BACKING: Smooth.



MICROFIBER – IT'S BETTER

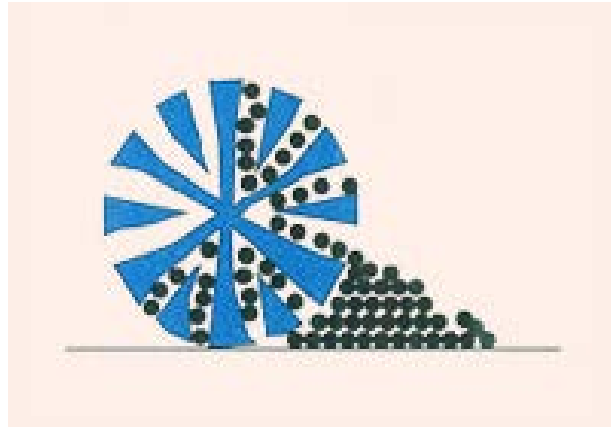
Microfiber is a strong, lint-free, ultra-fine fiber that lasts longer than traditional cotton fiber mops and removes bacteria, even without chemicals. It is the one of the most effective products for cleaning and is widely accepted for use in healthcare facilities.

COTTON FIBER



Cotton fiber only pushes dirt & moisture,
leaving surface dirty & wet

MICROFIBER



Microfiber lifts and traps dirt & moisture,
leaving surfaces clean, dry & polished

Morgan Healthcare Linen Services encourages you to consider Microfiber.

- ▶ Reduces bacteria levels up to 99%, far and away more than traditional cotton cleaning products. (EPA)
- ▶ Eliminates room-to-room cross contamination. (UC Davis Medical Center)
- ▶ Easier to use and more absorbent, resulting in upwards of 20% labor savings and a reduction in Workers-Compensation claims. (UC Davis Medical Center)
- ▶ 95% reduction in water and chemical costs, and reduced drying time, saving electricity. (EPA)

MICROFIBER PRODUCTS

Microfiber Flat Wet Mops

- Polypropylene scrubbing strips for better deep grout line cleaning by creating scrubbing action
- Wet mops have an additional layer of microfiber for fluid retention versus a layer of foam, making it more bacteria resistant
- Excellent launderability
- Available in four colors for coding systems - red, yellow, green and blue in 18" and 24"



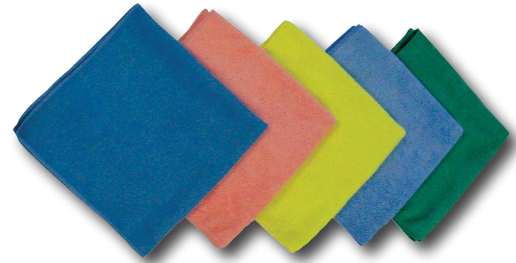
Microfiber High Duster

- Multi-use tool designed to clean hard-to-reach areas such as overhead pipes, ledges, ceiling fans and behind furniture
- Stainless steel sword embedded in heavy canvas can be bent in any shape
- A snap connection allows quick transfer to adjustable handle to permit high dusting
- Adjustable nut at handle for different angle cleaning
- For high dusting will fit #LFS100 and #CH246 microfiber handles
- Gray Frame, Size: 2-1/2" x 29"
- Blue Duster Cover, Size: 3-1/2" x 21-1/2"
- Blue Complete Duster, Size: 2-1/2" x 29"



Compact Mopping System Combo

- Small, lightweight bucket and sidepress wringer are perfect for small jobs; accommodates up to 20oz. mops
- Fits into tight spaces for convenient storage
- 2" non-marking casters
- Optional divider insert allows clean and dirty water to be kept separate
- Color: Yellow; Size: 10-1/2" x 17-1/2" x 18"; 21 qt.



Microfiber Cloths

- Excellent cleaning for any surface including counter tops, porcelain, chrome, glass and wood; excellent for washroom cleaning
- For general purpose cleaning; available in green, pink, red, blue, yellow for color coding
- Blue suede cloth is specially designed and knitted for cleaning glass and dust, and can be laundered extensively
- 16"x16" available in green, pink, red, blue, and yellow
- 12"x12" available in green and blue
- 16"x16" Suede Glass Cloth available in blue only

Microfiber Looped Wet Mops

- Low abrasive wet pads for general use
- No foam inner layer, only additional layers of microfiber for greater absorbency
- As durable as any microfiber on the market
- Available in blue and green in 18" and 24" lengths



Microfiber Buckets

- Both buckets constructed of durable plastic; accommodates 18" pads
- Optional gray wheels for easier maneuverability included with 6 gallon blue Bucket/Strainer combo, must be purchased separately for 5.25 gallon blue Top Down Charging Bucket
- Bucket/strainer combo ships with strainer for light wringing
- Top down charging bucket with water-tight lid
- Pad preparation in the laundry room instead of patient areas



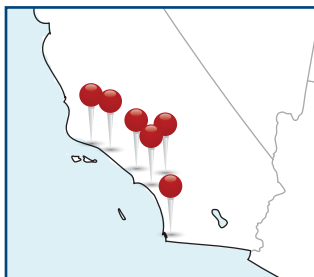
FASTER. BETTER. EASIER. MORE ECONOMICAL.



For high quality healthcare products and service, choose Morgan.

LOCATIONS

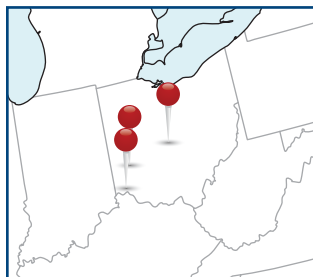
CORPORATE OFFICES: CHICAGO IL, TEL: 888-9-MORGAN



CALIFORNIA AREA

Tel: 800-924-9445

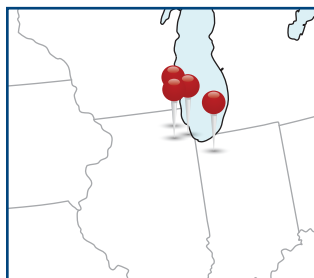
Los Angeles
Orange County
Riverside
San Diego
Santa Barbara
Ventura County



DAYTON, OH AREA

Tel: 800-423-1539

Cincinnati
Columbus
Dayton



ILLINOIS & NW INDIANA AREA

Tel: 800-440-2254

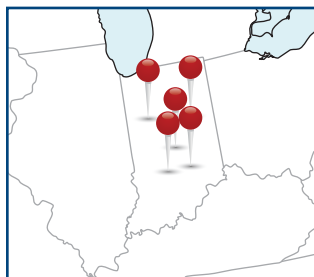
Arlington Heights
Chicago
Naperville
Northwest Indiana



CLEVELAND, OH AREA

Tel: 800-821-9081

Akron
Canton
Cleveland
Newton Falls
Youngstown



INDIANA AREA

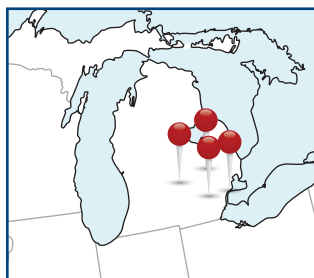
Tel: 800-638-3581

Bloomington
Columbus
Indianapolis
Lafayette
Muncie



NEW YORK AREA

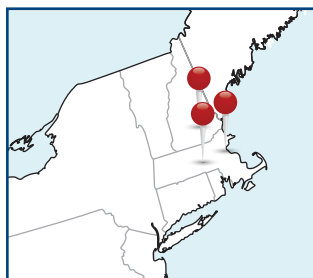
Buffalo, Tel: 800-564-4085
Jamestown, Tel: 800-538-0737
Olean, Tel: 800-391-4262
Rochester, Tel: 800-790-5545
Erie PA, Tel: 800-538-0737



MICHIGAN AREA

Tel: 888-507-2367

Ann Arbor
Detroit
Flint
Lansing



BOSTON, MA AREA

Tel: 877-546-3601

Boston
Worcester
Londonderry, NH



TOLEDO, OH AREA

Tel: 888-507-2367

Visit us at www.MorganServices.com

Proud Member of



Accredited by



Certified by



CLEAN GREEN
TSA CERTIFIED